

Hazeldene

by

MIRSAIGE PMC



MIRSAIGE

Mirsaige PMC is a Construction Project Management and Consultancy start-up looking to carve out a niche in a market inundated by your typical name-brand real estate developers. We are in this space to deliver construction projects customized to meet client requirements, prioritizing on quality and project schedule.

We provide complete strategic construction consultancy and management service from inception to completion. From working with you to understand your requirements and figuring the best path forward to handing over the keys to your fulfilled dream, we will be with you every step of the way.

WELCOME HOME TO

Hazeldene





Address: Plot 41, Road 10, Priyanka Runway City, Dhaka

Plot Size: 10 Katha | Corner Plot

No. of Units: 16

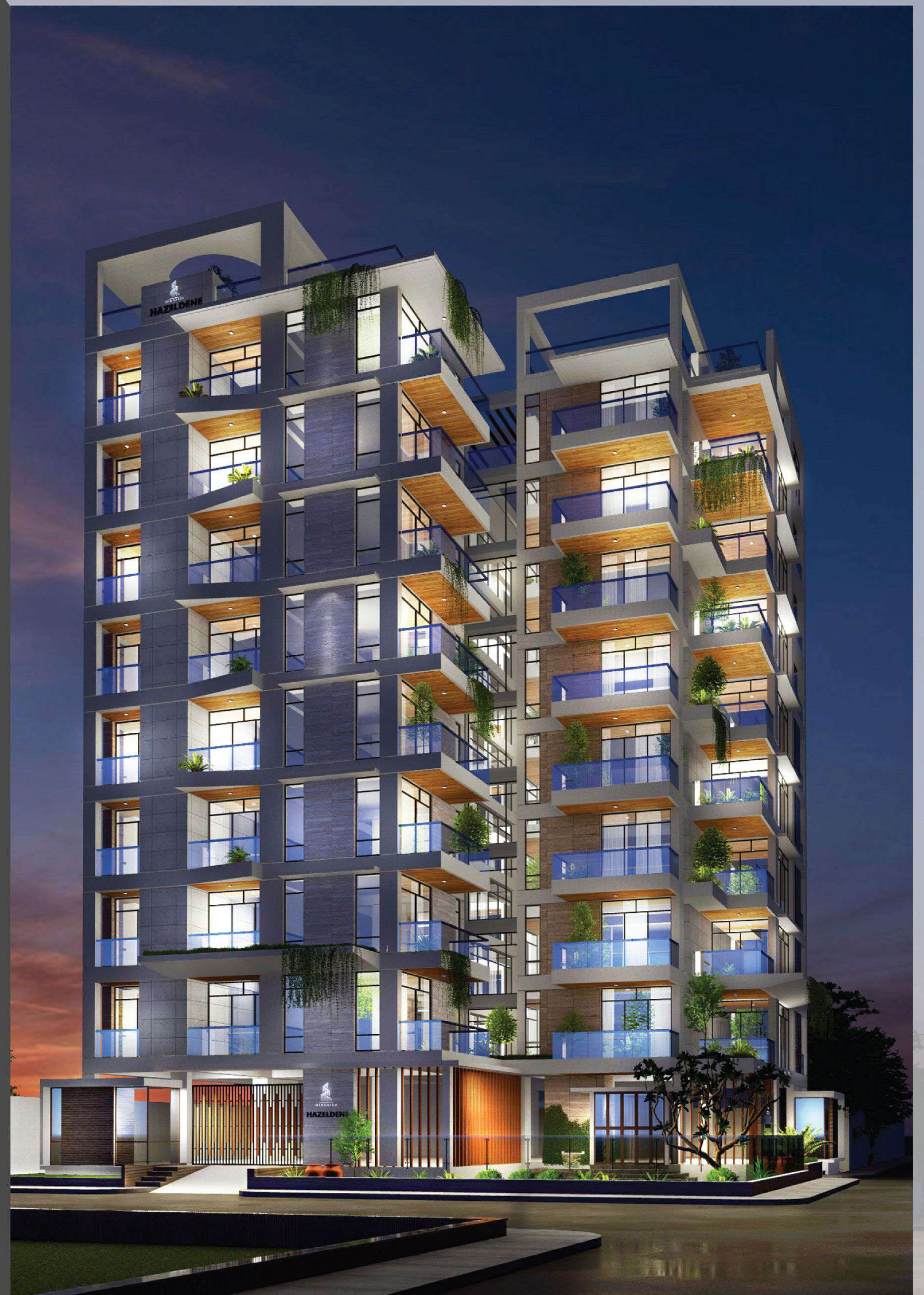
Unit Types: 2

Unit Size: 1975 Sq Ft | 2660 Sq Ft

Building Orientation: South

Parking Space: 19

Expected Handover June 2024





HOME IS WHERE YOUR HEART BEATS

Hazeldene is a more than just a residence; it is a haven.

Designed by expert lifestyle crafters, great care has been taken to ensure the complex lives up to its name—amplifying light, air, happiness and joy for its residents.

Nestled in a corner plot, Hazeldene is just the right concoction of harmony, comfort and tranquility.

·
·
Hazeldene is home...

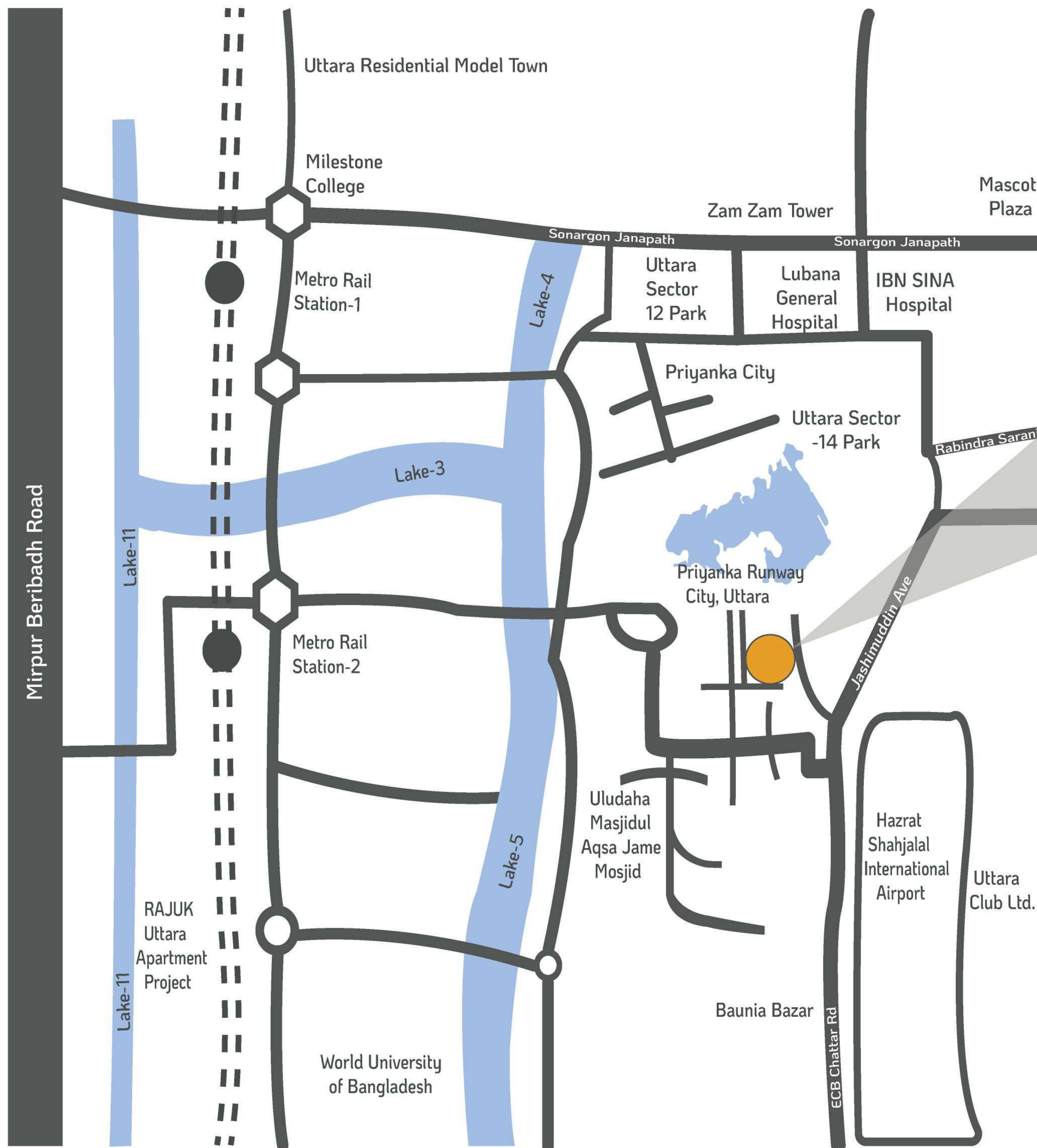


THE WAY HOME

Conveniently nestled between Hazrat Shahjalal International Airport and Uttara Model Town, Priyanka Runway City is located within a very attractive growth corridor of the bustling Dhaka metropolis. It is easily accessible from key areas such as Mirpur, Banani as well as Metro Rail Stations, making communications and commutes very easy.

In the chaos of daily Dhaka life, Hazeldene offers a quiet sanctuary like no other. Built up on a corner plot in a cozy nook of Priyanka Runway City, the premium apartment complex is far from the mad hustle of urban life; yet just an arm's reach from every modern necessity.

So - welcome to Hazeldene... Welcome HOME...



WHERE ELEGANCE MEETS
COMFORT



WHERE **LUXURY** MEETS
LIFESTYLE



Hazeldene's expansive combined living space is expertly designed to offer a grand experience. Whether you want to enjoy some quiet, family time or share happiness and joy with friends and family - Hazeldene has an option for every lifestyle.

With walls painted a luxurious tone from the rich color palettes of Berger, and floors finished with premium RAK (or equivalent) high quality floor tiles, your den will surely be a cozy center of luxurious elegance.





HAZELDENE

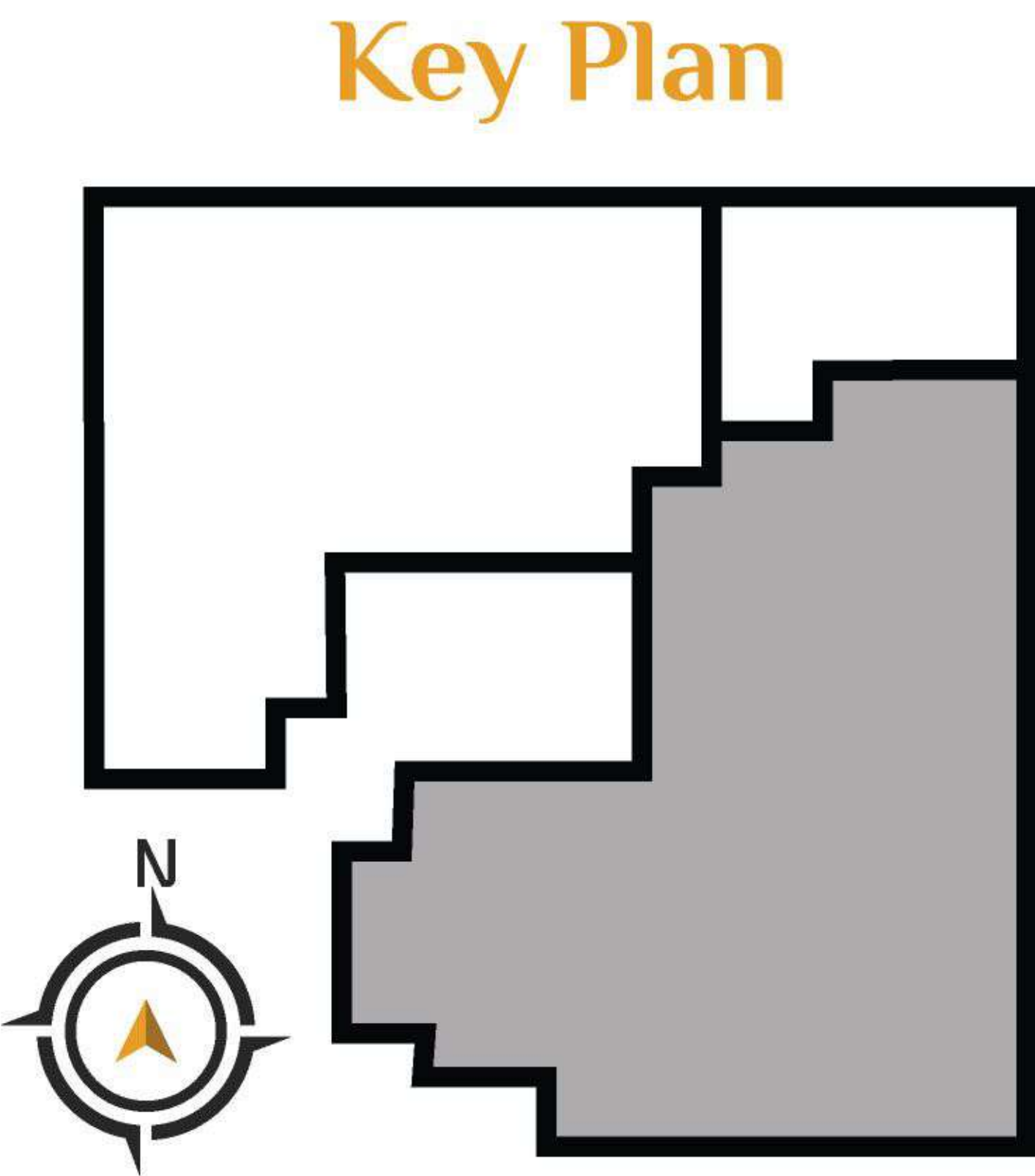
GROUND FLOOR

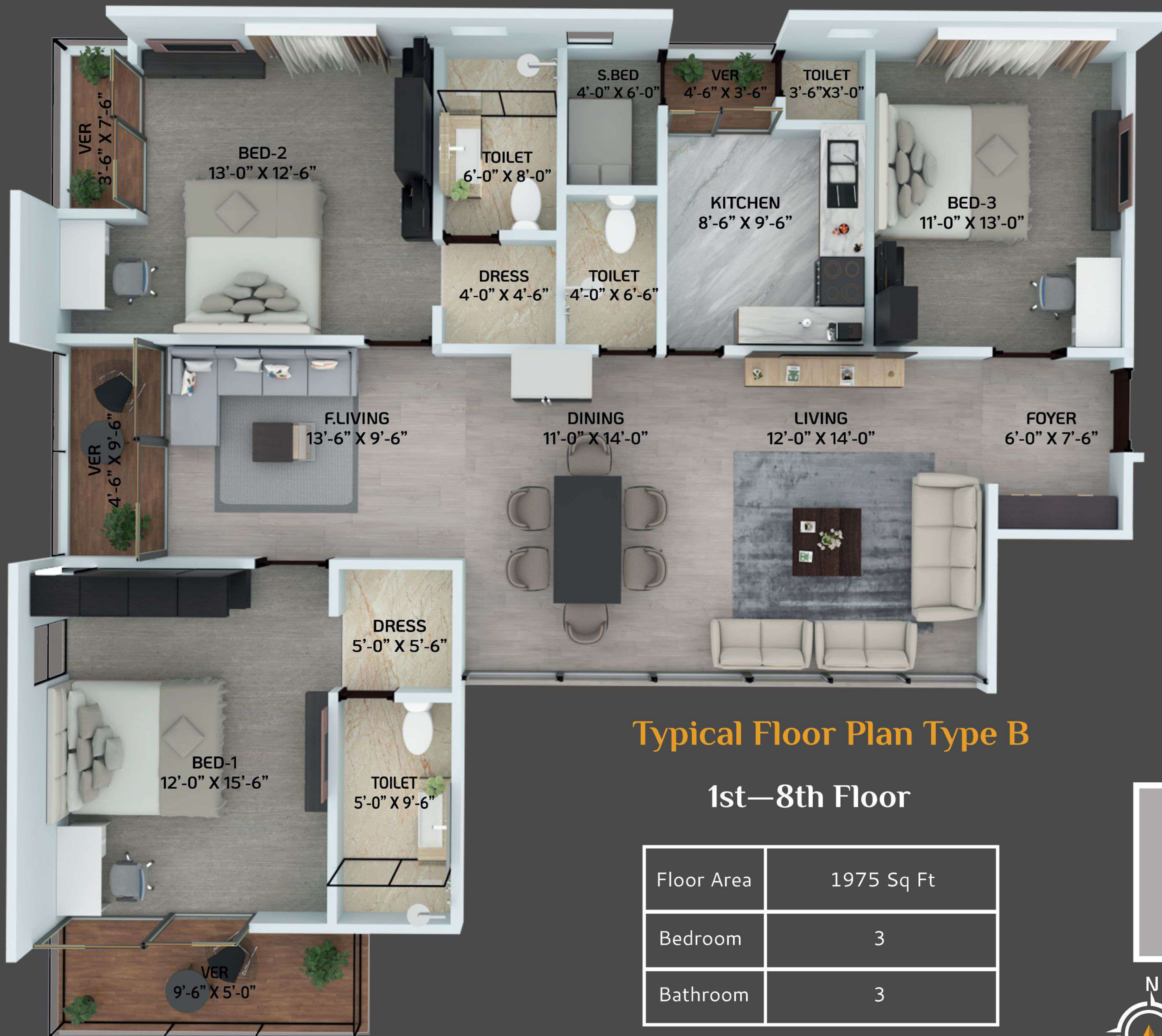
- Separate Entry & Exit Points
- 19 Car Park Spaces
- Luxurious Water Feature
- Waiting Lounge
- Green Play and Relaxation Area
- Driver's Waiting Room



Typical Floor Plan Type A
1st—8th Floor

Floor Area	2660 Sq Ft
Bedroom	4
Bathroom	4



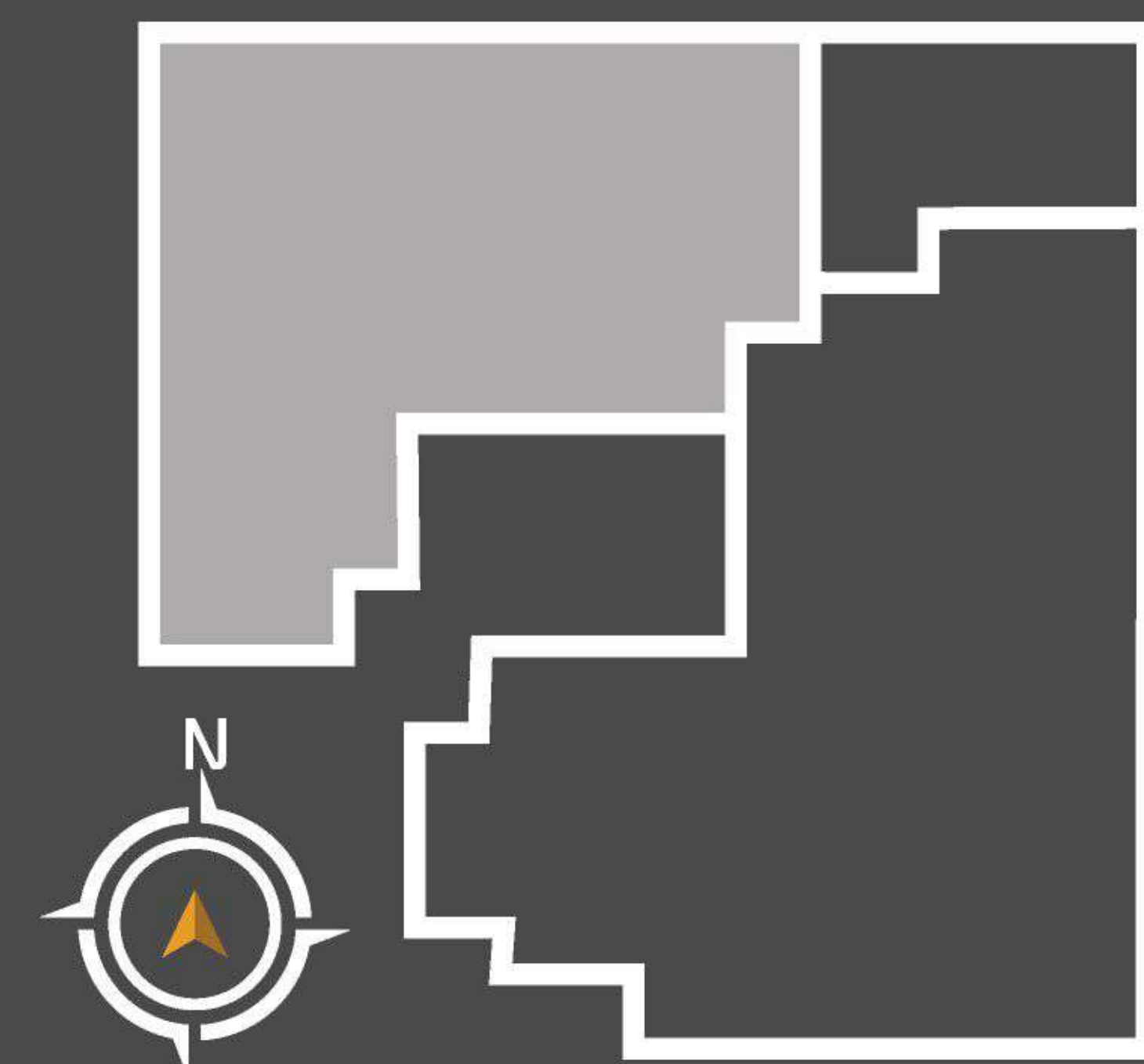


Typical Floor Plan Type B

1st—8th Floor

Floor Area	1975 Sq Ft
Bedroom	3
Bathroom	3

Key Plan





ROOF TOP

- Landscaped sitting area with waterbody
- Multipurpose Function Hall
- Prayer Hall & Meeting Room
- Discrete Clothes Drying Area

Hazeldene's spacious bed and bath suites are crafted to maximize your comfort. The bedrooms, with attached baths and dress areas will become your personal haven.

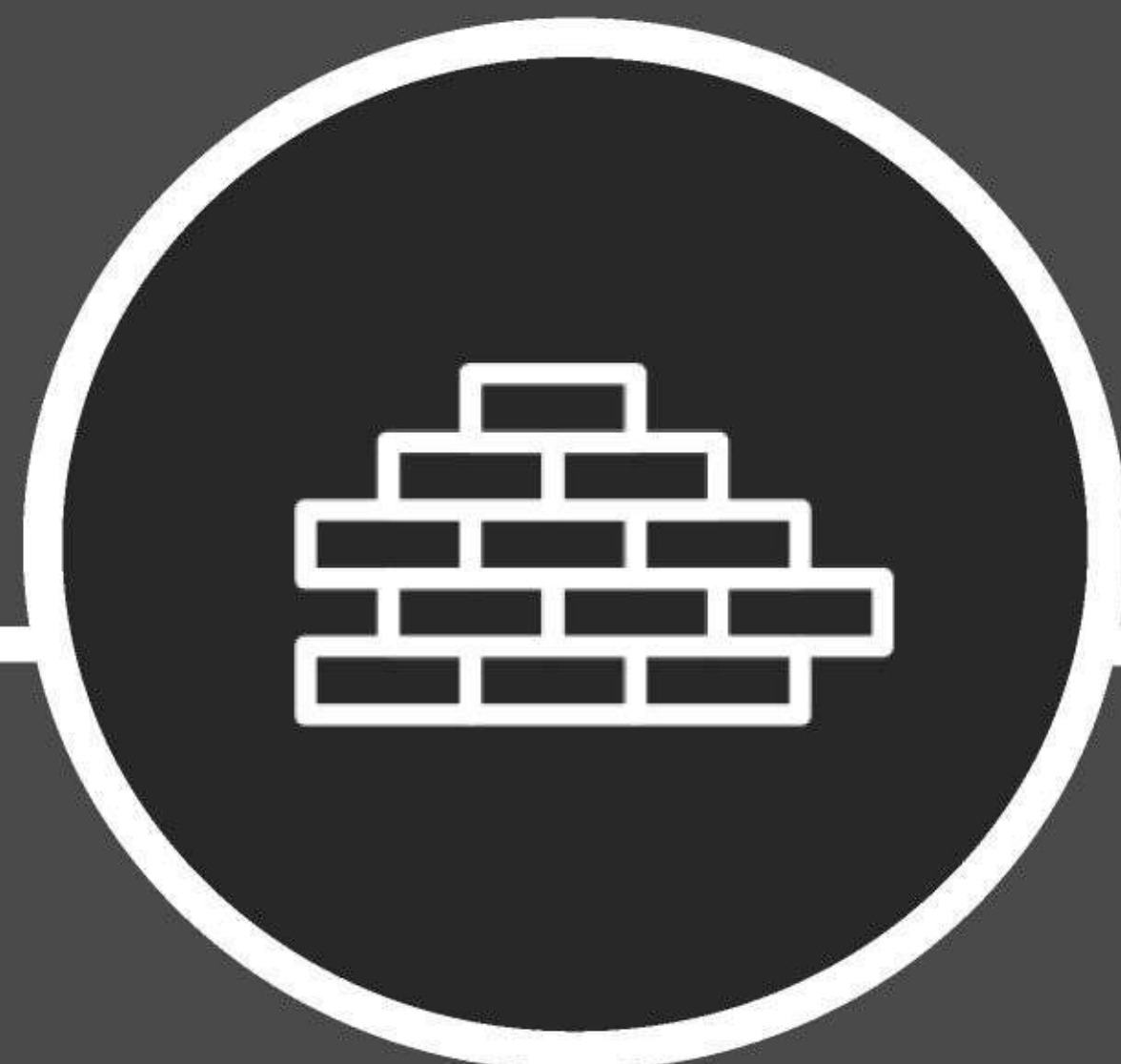
And with the bath suites decked out in superior fixtures and fittings, you'll enjoy heightened comfort.

Because this is where **REST** MEETS
RELAXATION





THE *Hazeldene* GUARANTEE



Superior quality materials for assured construction integrity and strength to surpass all performance benchmarks



Expertly designed by master lifestyle crafters and brought to life by a dedicated team of adept construction professionals.



Building designed as per rules and covenants of BNBC, ACI and ASTM



Strict adherence to construction schedule and round the clock quality monitoring

STRUCTURALS

- Cement: Lafarge-Holcim, Shah, Seven Rings and equivalent
- Rebar: Grade 72.5 steel from BSRM, AKS, RSM and equivalent
- Superior quality aggregates as per structural requirements and relevant Building Codes

FACADE

- Artistically crafted nomenclature bearing project name placed adjacent to entry and exit points
- Stylish combination of glass and brick construct boundary walls adjacent to entry and exit points

DESIGN

- Spacious residential units to suit every lifestyle
- Expertly crafted layout to facilitate seamless interplay of light and air
- Carefully thought out design to maximize functionality and luxurious comfort
- Sweeping living and dining areas for entertaining friends and family
- Stately bedrooms and grand bath suites for heightened grandeur

ELEVATOR & LOBBY

- 2 nos high quality, branded elevator
- Tile finished internal staircases
- Attractively designed elevator lobbies to complement a luxurious accent

APARTMENT

- Decorative, solid wooden entry door with premium handle lock and stylish apartment number plate
- Solid wooden door frames for main entry and internal doors (except bathrooms)
- Premium quality veneer flush doors for interior rooms (except bathrooms)
- RAK, CBC, X Monica or equivalent 24" x 24" tiles for all internal floor areas (except bathrooms and kitchen)
- Telephone/ Internet and TV line in Master Suite and Living Room
- Quality electrical gang switches, plug points and other fittings
- Provision for hot water in bathrooms
- Provision for air conditioner in bedrooms and living areas

KITCHEN

- Concrete kitchen top at 2'-9" height from floor with marble/ granite top
- Provision for double burner gas stove
- RAK, CBC, X Monica or equivalent 12" x 12" floor tiles
- 12" x 16" wall tiles up to 7' high
- One double bowl high polish countertop stainless steel sink with faucet
- Provision for LP gas
- Provision for kitchen hood
- Provision for concealed hot & cold water line

BATHROOM

- RAK or equivalent toilet suite and basin across all bathroom (except staff bath)
- RAK, CBC, X Monica or equivalent 12" x 12" floor tiles and 10" x 16" full height wall tiles across all bathrooms
- Polished mirror
- Provision for concealed hot & cold water line in bathrooms (except staff bath)

****Upgrade options available**



WHERE **HAPPINESS**



MEETS **YOU**



Hazeldene

WHERE YOU ARE HOME



MIRSAIGE

www.mirsaige-bd.com

Mirsaige PMC

Office Address: Level 6, Plot 30, Tropical Shormi Center
Gareeb E Newaz Avenue, Sector 13, Uttara
Dhaka 1230

Phone: 017 8282 9191

Email: contact@mirsaige-bd.com